

SIMPLY

FRAMES & HOLDERS



Contents

WALL HOLDERS 04

1/16" Aluminum Wall Holders	04
1/16" Aluminum Ribbed Wall Holders	07
1/16" Aluminum Double Wall Holders	08
1/8" Aluminum Wall Holders	09



DESK HOLDERS 10

1/16" Aluminum Desk Holders	10
1/16" Aluminum Ribbed Desk Holders	11
Raised Aluminum Desk Holders	12



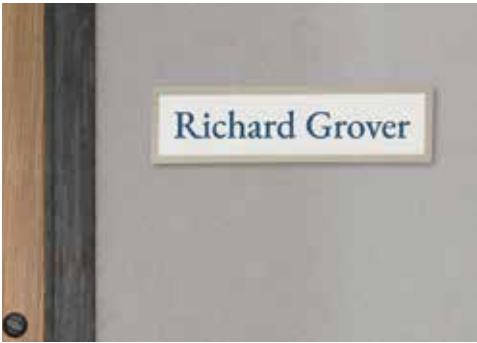
DESK BASES 13

Design	13
Architect	14
Traditional	14
Sign	15
Plastic	16



PLASTIC FRAMES & INSERTS 17

Design Round	17
Design Square	18
Architect Round	19
Architect Square	20
Inserts for Architect Frames	21



CORRIDOR & METAL FRAMES 22

Corridor & Corridor/Ceiling Mount	22
Curves	24



MOUNTING & STANDOFFS 25

Gripper	25
Surface Mount Kit	25
Gyford Simply Standoffs	26



FRAME ACCESSORIES 27

Suction Cups & Partition Pins	27
Cubicle Hangers	28
Simply Dual-Lock	28
Corridor Hardware Mounting	28

Simply Wall Holders

1/16" Material Thickness

Anodized aluminum Simply Wall Holders have a clean, modern look ideal for professional nameplates or wayfinding and directional signage.



Finished Example

Available in five anodized finishes:

*Polished anodized finish



Insert Height	Item Number	Color	Length
3/4"	SW4.75S	Silver	4"
	SW6.75S	Silver	6"
	SW39.75S	Silver	39"

Insert Height	Item Number	Color	Length
1"	SW41G	Rose Gold	4"
	SW41S	Silver	4"
	SW61B	Matte Black	6"
	SW61G	Rose Gold	6"
	SW61S	Silver	6"
	SW81B	Matte Black	8"
	SW81G	Rose Gold	8"
	SW81S	Silver	8"
	SW101MB	Matte Black	10"
	SW101G	Rose Gold	10"
	SW101S	Silver	10"
	SW121S	Silver	12"
	SW391B	Matte Black	39"
	SW391SS	Satin Silver	39"
	SW391S	Silver	39"

39" pieces do not come with mounting holes.

1/16" Material Thickness

Insert Height	Item Number	Color	Length
1-1/2"	SW415S	Silver	4"
	SW615B	Matte Black	6"
	SW615S	Silver	6"
	SW815B	Matte Black	8"
	SW815G	Rose Gold	8"
	SW815S	Silver	8"
	SW1015G	Rose Gold	10"
	SW1015S	Silver	10"
	SW1215G	Rose Gold	12"
	SW1215S	Silver	12"
	SW3915B	Matte Black	39"
	SW3915G	Rose Gold	39"
	SW3915SS	Satin Silver	39"

Insert Height	Item Number	Color	Length
2"	SW42S	Silver	4"
	SW62MB	Matte Black	6"
	SW62S	Silver	6"
	SW82B	Matte Black	8"
	SW82G	Rose Gold	8"
	SW82SS	Satin Silver	8"
	SW82S	Silver	8"
	SW82YG	Yellow Gold	8"
	SW92S	Silver	9"
	SW102B	Matte Black	10"
	SW102SS	Satin Silver	10"
	SW102G	Rose Gold	10"
	SW102S	Silver	10"
	SW102YG	Yellow Gold	10"
	SW122MB	Matte Black	12"
	SW122G	Rose Gold	12"
	SW122S	Silver	12"
	SW122YG	Yellow Gold	12"
2-1/2"	SW392B	Matte Black	39"
	SW392G	Rose Gold	39"
	SW392SS	Satin Silver	39"
	SW392S	Silver	39"

Insert Height	Item Number	Color	Length
2-1/2"	SW82.5G	Rose Gold	8"
	SW82.5S	Silver	8"
	SW392.5B	Matte Black	39"
	SW392.5SS	Satin Silver	39"

39" pieces do not come with mounting holes.

Insert Height	Item Number	Color	Length
3"	SW83G	Rose Gold	8"
	SW83S	Silver	8"
	SW103G	Rose Gold	10"
	SW103S	Silver	10"
	SW123B	Matte Black	12"
	SW123G	Rose Gold	12"
	SW123S	Silver	12"
	SW393B	Matte Black	39"
	SW393SS	Satin Silver	39"
	SW393S	Silver	39"

Insert Height	Item Number	Color	Length
4"	SW84G	Rose Gold	8"
	SW84S	Silver	8"
	SW104S	Silver	10"
	SW124G	Rose Gold	12"
	SW124S	Silver	12"
	SW394B	Matte Black	39"
4-1/2"	SW394SS	Satin Silver	39"



1/16” Material Thickness - No Mounting Holes

Anodized aluminum Simply Wall Holders have a clean, modern look ideal for directory signage.



Finished Example

Available in three anodized finishes:



Insert Height	Item Number	Color	Length
1"	SWNH31S	Silver	3"
	SWNH41SS	Satin Silver	4"
	SWNH61MB	Matte Black	6"
	SWNH91MB	Matte Black	9"
	SWNH121MB	Matte Black	12"

Insert Height	Item Number	Color	Length
1-1/2"	SWNH615SS	Satin Silver	6"

Insert Height	Item Number	Color	Length
2"	SWNH62SS	Satin Silver	6"
	SWNH82SS	Satin Silver	8"

See pages 4-5 for 39" no holes wall options.

Ribbed 1/16” Material Thickness

Anodized aluminum ribbed Simply Wall Holders have a clean, modern look ideal for professional nameplates or wayfinding and directional signage.



Two counter-sunk holes* for standard screw mounting.
*39" pieces do not come with mounting holes.



Finished Example

Available in three anodized finishes:



Insert Height	Item Number	Color	Length
2"	SWR82B	Matte Black	8"
	SWR82G	Rose Gold	8"
	SWR82S	Silver	8"
	SWR102B	Matte Black	10"
	SWR102G	Rose Gold	10"
	SWR102S	Silver	10"
	SWR392B	Matte Black	39"
	SWR392S	Silver	39"
	SWR392G	Rose Gold	39"

39" pieces do not come with mounting holes.



Double Wall 1/16” Material Thickness

Anodized aluminum Simply Double Wall Holders have a clean, modern look ideal for directory or wayfinding signage.



Finished Example

Available in three anodized finishes:



Insert Height	Item Number	Color	Length
2"	SW811S	Silver	8"
	SW1011S	Silver	10"
	SW3911MB	Matte Black	39"
	SW3911S	Silver	39"
	SW3911SS	Satin Silver	39"

39” pieces do not come with mounting holes.



1/8” Material Thickness

Anodized aluminum Simply Wall Holders have a clean, modern look ideal for professional nameplates or wayfinding and directional signage.



Finished Example

Available in four anodized finishes:



Insert Height	Item Number	Color	Length
2"	SW8218S	Silver	8"
	SW8218B	Matte Black	10"
	SW10218G	Rose Gold	10"
	SW10218S	Silver	10"
	SW10218YG	Yellow Gold	10"
	SW12218S	Silver	12"
	SW39218B	Matte Black	39"
	SW39218G	Rose Gold	39"
	SW39218S	Silver	39"
	SW39218YG	Yellow Gold	39"

Insert Height	Item Number	Color	Length
3"	SW123S18	Silver	12"
	SW393MB18	Matte Black	39"
	SW393SS18	Satin Silver	39"
	SW393S18	Silver	39"

39” pieces do not come with mounting holes.



Simply Desk Holders

1/16” Material Thickness

Anodized aluminum Simply Desk holders have a clean, modern look ideal for professional desk nameplates.



Finished Example

Available in five anodized finishes:

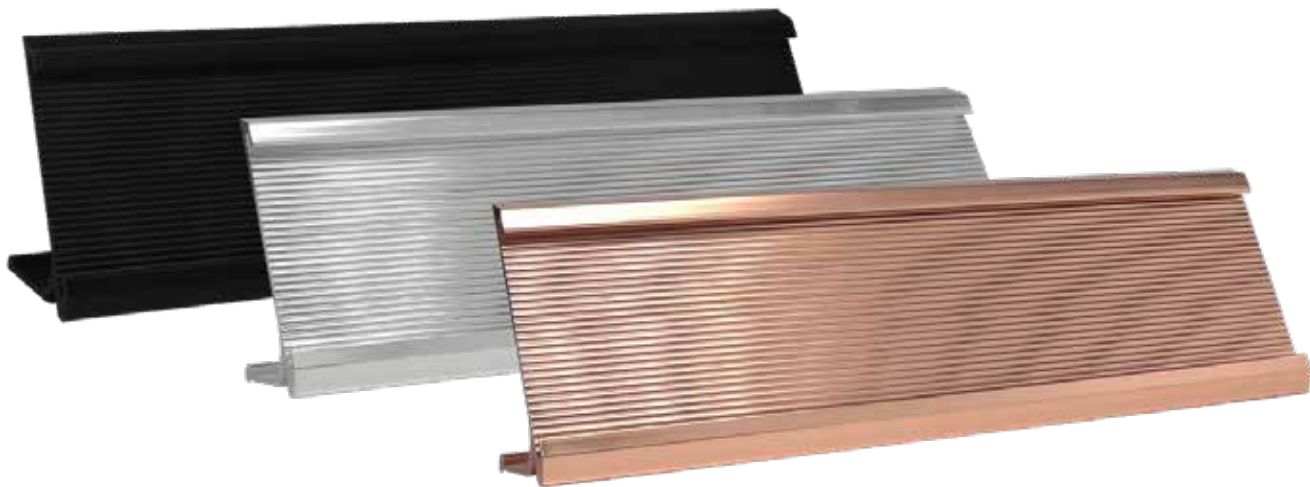
• Polished anodized finish



Insert Height	Item Number	Color	Length
2"	SD82B	Matte Black	8"
	SD82G	Rose Gold	8"
	SD82SS	Satin Silver	8"
	SD82S	Silver	8"
	SD82YG	Yellow Gold	8"
	SD102B	Matte Black	10"
	SD102G	Rose Gold	10"
	SD102SS	Satin Silver	10"
	SD102S	Silver	10"
	SD102YG	Yellow Gold	10"
	SD122MB	Matte Black	12"
	SD122G	Rose Gold	12"
	SD122SS	Satin Silver	12"
	SD122YG	Yellow Gold	12"
	SD392B	Matte Black	39"
	SD392G	Rose Gold	39"
	SD392S	Silver	39"
	SD392YG	Yellow Gold	39"

Ribbed 1/16” Material Thickness

Anodized aluminum Simply Ribbed Desk Holders have a clean, modern look ideal for professional desk nameplates.



Available in three anodized finishes:

• Polished anodized finish



Finished Example

Insert Height	Item Number	Color	Length
2"	SDR82B	Matte Black	8"
	SDR82G	Rose Gold	8"
	SDR82S	Silver	8"
	SDR102B	Matte Black	10"
	SDR102G	Rose Gold	10"
	SDR102S	Silver	10"



Raised 1/16” Material Thickness

Anodized aluminum Simply Raised Desk Holders will take professional desk nameplates to the next level with an elevated base.



Available in two anodized finishes:



Insert Height	Item Number	Color	Length
2"	SD210RG	Rose Gold	10"
	SD210S	Silver	10"



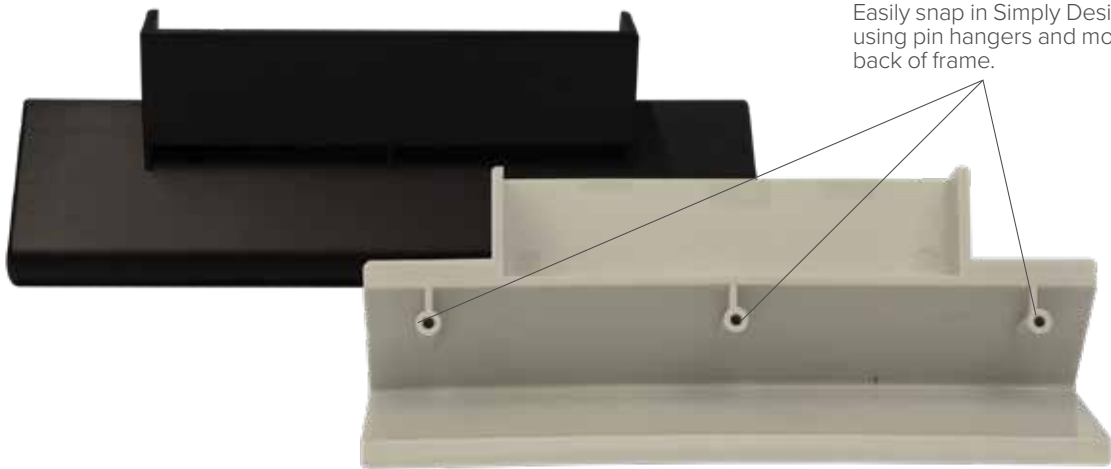
Finished Example



Simply Desk Bases

Simply Design Desk Base

Simply Design Desk Base is designed to easily attach to any 2”x 8” or 2” x 10” Simply Design plastic frame to create an easy desk sign. Easily snap in Simply Design frames using the pins and mounting holes on back of frame.

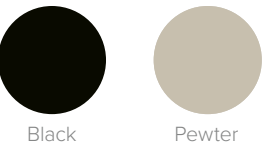


Easily snap in Simply Design plastic frame using pin hangers and mounting holes on back of frame.



Desk Base with Plastic Frame (Item #SAP28PWT) without insert.

Available in two finishes:



Height	Item Number	Color
2-1/2"	SAP26B	Black
	SAP26PWT	Pewter



Desk Base with Plastic Frame (Item #SAP28PWT) with insert.

See pages 17-18 for Desk Frames options.



Simply Architect Desk Base

Simply Architect Desk Base is designed to easily attach to any 1.75" x 9.125" Simply Architect frame to create an easy desk sign. Easily snap in Simply Architect frames using the pins and mounting holes on back of frame.

Easily snap in Simply Architect frames using the pins and mounting holes on back of frame.

Item Number	Color
SD6INBB	Black

Desk Base with Plastic Frame (Item #SAP28PWT) without insert.

Desk Base with Plastic Frame (Item #SAP28PWT) with insert.

Available in Black:

See pages 19-20 for Desk Frames options.

Simply Traditional Aluminum Desk Base

Anodized aluminum Traditional Desk Bases have a clean, modern look with a base channel and open top perfect for displaying message signs or nameplates. Accommodates inserts up to 1/16" thick. 2" maximum sign height.



Finished Example

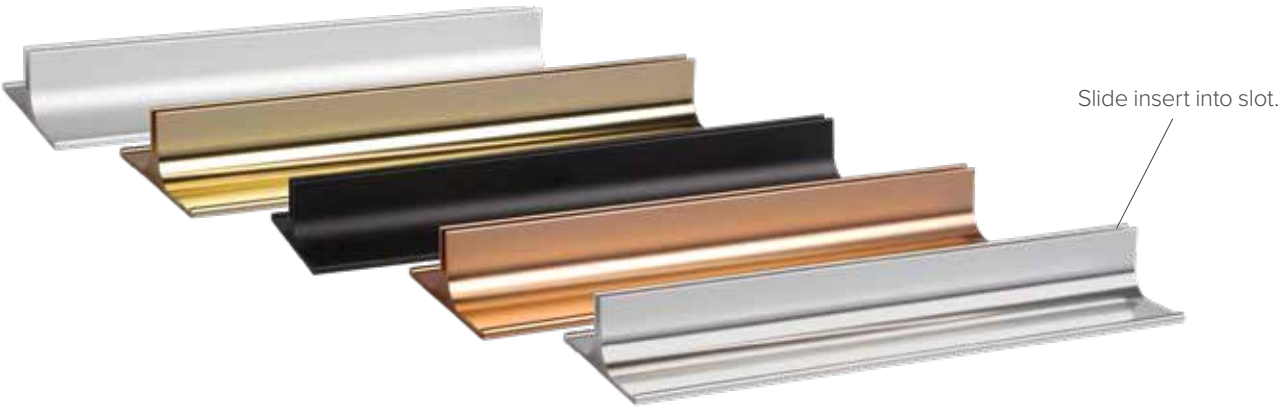
Available in two anodized finishes:
*Polished anodized finish



Height	Item Number	Color	Length
3/4"	SD.758S	Silver	8"
	SD.758RG	Rose Gold	8"
	SD.7510S	Silver	10"
	SD.7510RG	Rose Gold	10"

Simply Aluminum Sign Base

Anodized aluminum Simply Anodized Sign Bases have a clean, modern look with a base channel and open top perfect for displaying message signs or nameplates. Accommodates inserts up to 1/8" thick.



Available in five anodized finishes:



Finished Example

Height	Item Number	Color	Length
2-1/2"	SDB39B	Matte Black	39"
	SDB39G	Rose Gold	39"
	SDB39SS	Satin Silver	39"
	SDB39S	Silver	39"
	SDB39YG	Yellow Gold	39"



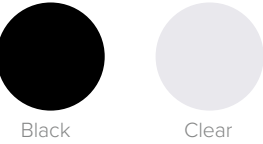
Simply Plastic Desk Base

Simply Plastic Desk Bases are the perfect low profile base for any sign or desk plate. The base has a single angled slot and no top channel which allows for various height inserts. Accommodates inserts up to 1/16" thick.



Finished Example

Available in two finishes:



Item Number	Color	Length
SD82ABSB	Black	8"
SD82ABSC	Clear	8"
SD102ABSB	Black	10"
SD102ABSC	Clear	10"

Simply Plastic Frames

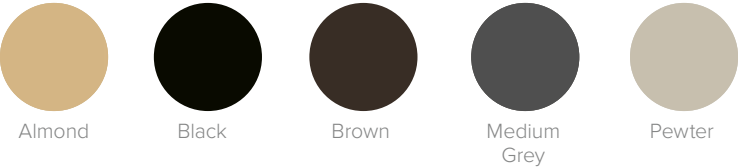
Simply Design Round Plastic Frames for 1/8" Material Thickness

Simply Design series is an injection molded plastic sign system featuring modern, 3/8" rounded corners. Designed with two keyholes on the back for solid surface mounting or pin hangers for easy fabric mounting to cubicle walls. Works great with Simply Dual-Lock and compatible with Simply Sign Desk Bases (sold separately).



Finished Example with Insert

Available in five finishes:



See page 13 for Desk Base options.

Insert Height	Item Number	Color	Length
2"	SAP28AL	Almond	8"
	SAP28B	Black	8"
	SAP28BR	Brown	8"
	SAP28MGR	Medium Grey	8"
	SAP28PWT	Pewter	8"
	SAP210B	Black	10"
	SAP210BR	Brown	10"
	SAP210MGR	Medium Grey	10"
	SAP210PWT	Pewter	10"

Insert Height	Item Number	Color	Length
4"	SD44B	Black	4"

Insert Height	Item Number	Color	Length
6"	SD66MD	Medium Grey	6"
	SD66B	Black	6"

Insert Height	Item Number	Color	Length
8"	SD88B	Black	8"
	SD66B	Black	6"

The frame size listed are inside dimensions.

Simply Design Square Plastic Frames for 1/8" Material Thickness

Simply Design series is an injection molded plastic sign system featuring modern, square corners. Designed with two keyholes on the back for solid surface mounting or pin hangers for easy fabric mounting to cubicle walls. Works great with Simply Dual-Lock and compatible with Simply Sign Desk Bases (sold separately).



Two keyholes for solid surface mounting or pin hangers.



Finished Example with Insert

Available in three finishes:



Black



Medium Grey



Pewter

Insert Height	Item Number	Color	Length
2"	SD28B	Black	8"
	SD210B	Black	10"
	SD210MGR	Medium Grey	10"
	SD210PWT	Pewter	10"

The frame size listed are inside dimensions.

See page 13 for Desk Base options.

Simply Architect Round Plastic Frames for 1/8" and 1/16" Material Thickness

Simply Architect is a series injection molded plastic frame available in 5/16" round or square corners that allows you to create a comprehensive sign system based on your customers request. Easily mix and match round and square cornered frames within the series to create a unified look and feel. Simply Architect frames are designed with two mounting holes on the back to easily attach to walls and other rigid surfaces. Works great with Simply Dual-Lock and compatible with Simply Architect Desk Bases and inserts (sold separately).



Two mounting holes for solid surface mounting or pin hangers.



Finished Example with Insert

Insert Height	Item Number	Color	Length
1.75"	SAPR1759AL	Almond	9.125"
	SAPR1759B	Black	9.125"
	SAPR1759BR	Brown	9.125"
	SAPR1759PWT	Pewter	9.125"
	SAPR1759WH	White	9.125"

The frame size listed are insided dimensions.

Available in five finishes:



Almond



Black



Medium Grey



Pewter



White

See page 14 for Desk Base options.



Simply Architect Square Plastic Frames for 1/8" and 1/16" Material Thickness

Simply Architect is a series injection molded plastic frame available in 5/16" round or square corners that allows you to create a comprehensive sign system based on your customers request. Easily mix and match round and square cornered frames within the series to create a unified look and feel. Simply Architect frames are designed with two mounting holes on the back to easily attach to walls and other rigid surfaces. Works great with Simply Dual-Lock and compatible with Simply Architect Desk Bases and inserts (sold separately).

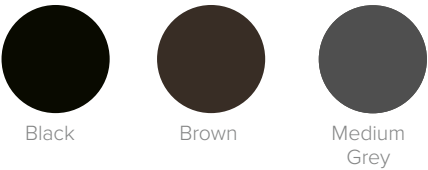


Finished Example with Insert

Insert Height	Item Number	Color	Length
1.75 "	SAPS1759B	Black	9.125"
	SAPS1759BR	Brown	9.125"
	SAPS1759GR	Medium Grey	9.125"

The frame size listed are inside dimensions.

Available in three finishes:



See pages 14 for Desk Base options.



Simply Inserts for Architect Frames

Molded insert for Simply Architect Plastic Series. These are designed to easily snap in and out of frames for fast, changeable signs. Inserts are manufactured with the classic yet durable Rowmark ADA single-layer matte finish plastic or Rowmark LaserMax two-layer matte finish plastic. Can be personalized with laser engraving, rotary engraving or UV-LED printing.



Without Frame

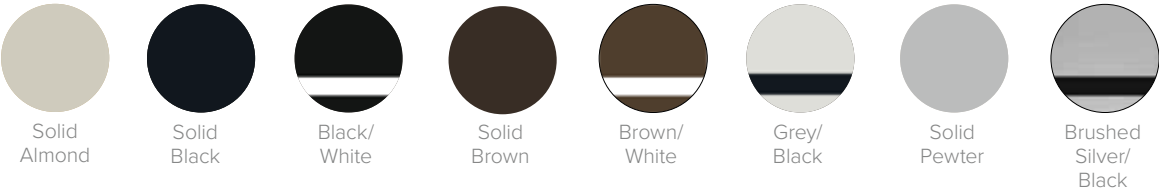


Finished Example with Frame (Item #SAPR1759PWT)

Corner Finish	Item Number	Color	Size
Round	SAPR1759IB/W	Black/White	1.75" x 9.125"
	SAPR1759IBR/W	Brown/White	1.75" x 9.125"
	SAPR1759IB/W	Brushed Silver/Black	1.75" x 9.125"
	SAPR1759IGR/B	Grey/Black	1.75" x 9.125"
	SAPR1759IAL	Solid Almond	1.75" x 9.125"
	SAPR1759IB	Solid Black	1.75" x 9.125"
	SAPR1759IBR	Solid Brown	1.75" x 9.125"
	SAPR1759IPWT	Solid Pewter	1.75" x 9.125"

Corner Finish	Item Number	Color	Size
Square	SAPS1759IB/W	Black/White	1.75" x 9.125"
	SAPS1759IBR/W	Brown/White	1.75" x 9.125"
	SAPS1759IGR/B	Grey/Black	1.75" x 9.125"
	SAPS1759IAL	Solid Almond	1.75" x 9.125"
	SAPS1759IB	Solid Black	1.75" x 9.125"
	SAPS1759IBR	Solid Brown	1.75" x 9.125"
	SAPS1759IPWT	Solid Pewter	1.75" x 9.125"

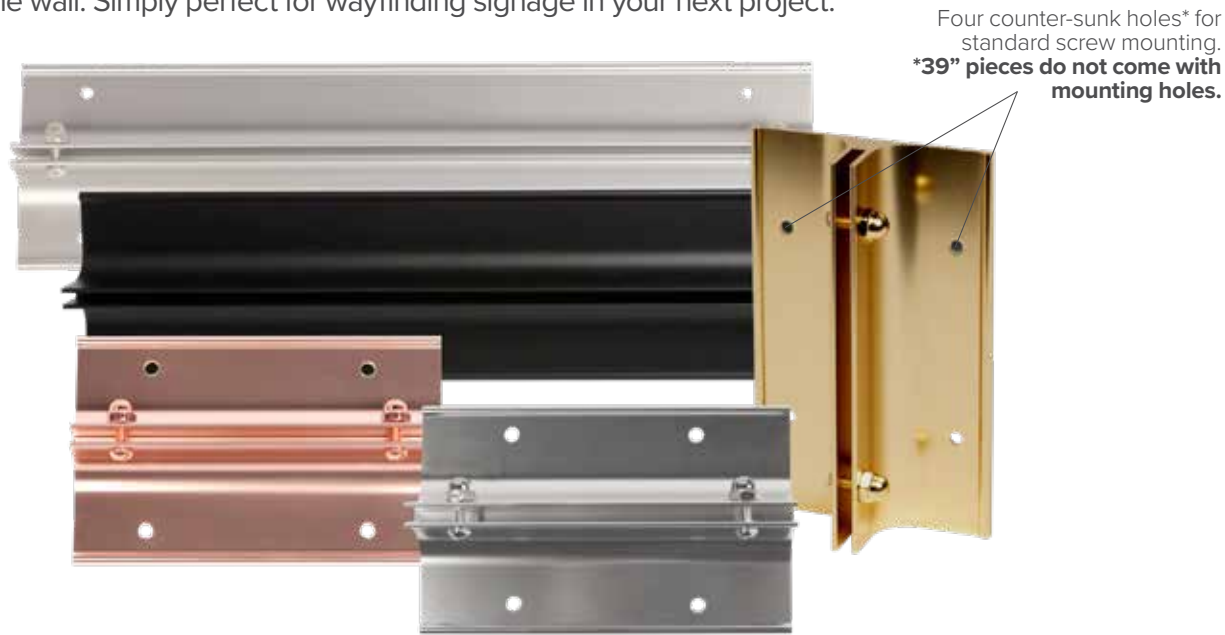
Available in eight finishes:



Simply Corridor & Metal Frames

Simply Corridor Wall Mount with 1/8" Slot

Simply Corridor Mount brackets are designed to hold single and double-sided signs at a 90 degree angle to the wall. Simply perfect for wayfinding signage in your next project.



Height	Item Number	Color
2"	SB2G	Rose Gold
	SB2S	Silver

Height	Item Number	Color
3"	SB3G	Rose Gold
	SB3S	Silver
	SB3YG	Yellow Gold

Height	Item Number	Color
4"	SB4G	Rose Gold
	SB4SS	Satin Silver
	SB4S	Silver
	SB4YG	Yellow Gold

Height	Item Number	Color
5"	SB6SS	Satin Silver
	SB5S	Silver

Height	Item Number	Color
6"	SB5SS	Satin Silver
	SB6S	Silver

Height	Item Number	Color
8"	SB8SS	Satin Silver

Height	Item Number	Color
10"	SB10SS	Satin Silver
	SBB10S	Silver

Height	Item Number	Color
12"	SB12SS	Satin Silver

Height	Item Number	Color
39"	SB39B	Matte Black
	SB39G	Rose Gold
	SB39SS	Satin Silver
	SB39S	Silver
	SB39YG	Yellow Gold



Available in five anodized finishes:

*Polished anodized finish



Rose Gold



*Rose Gold



Satin Silver



*Silver



*Yellow Gold

Simply Corridor and Ceiling Bracket with 1/8" Slot

Simply Corridor and Ceiling Bracket are double sided and can be mounted perpendicular to the wall or the ceiling. With a concealed mounting system it is simply perfect for you next wayfinding or signage project. Double sided tape or adhesive is required for sign installation.



Finished Example



Available in Satin Silver:



Item Number	Color	Length
SBCC6SS	Satin Silver	6"
SBCC8SS	Satin Silver	8"
SBCC39SS	Satin Silver	39"

Simply Curves Frame with Lens

The Simply Curves frame has everything you need for your next signage project. This signage system offers a sleek dimensional, curved profile to meet any office, industrial and institutional environment. Simply Curves comes with a clear non-glare .020” lens to protect your sign or insert. Accommodates inserts to 1/16” thick without lens.



Finished Example

Available in two finishes:



Matte Black

Satin Silver

Insert Height	Item Number	Color	Length
4"	SC46MB	Matte Black	6"
	SC46SS	Satin Silver	6"
	SC48MB	Matte Black	8"
	SC48SS	Satin Silver	8"

Insert Height	Item Number	Color	Length
6"	SC66MB	Matte Black	6"
	SC66SS	Satin Silver	6"
	SC68MB	Matte Black	8"
	SC68SS	Satin Silver	8"
	SC68SS	Satin Silver	8"

Insert Height	Item Number	Color	Length
8"	SC86MB	Matte Black	6"
	SC86SS	Satin Silver	6"
	SC88MB	Matte Black	8"
	SC88SS	Satin Silver	8"
	SC88SS	Satin Silver	8"

Mounting & Standoffs

Simply Sign Grippers

Simply Sign Grippers are the perfect solution for decorative sign mounting. This sleek aluminum gripper requires no drilling into your substrate making it versatile in all environments. Easy to mount, these holders permit a wide range of material thicknesses to be confidently secured. Mount singularly or in pairs. Accommodates inserts up to 5/16” thick.



Finished Example



Available in Satin Silver:



Item Number	Color	Length
SGL4S	Satin Silver	4"
SGL8S	Satin Silver	8"
SGL12S	Satin Silver	12"

Gyford Simply Standoff Surface Mount Kit

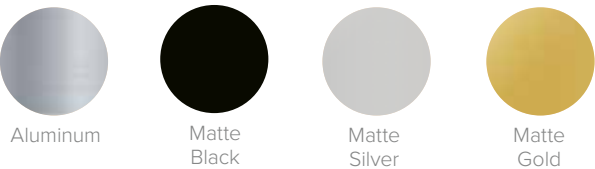
Gyford Simply Standoff Surface Mount kit is perfect to flush mount signs, artwork and panels to a wall. Use these Surface Mount Standoff kits to add slight dimension to your designs and give your project a finished look. Each kit includes a set of four (4) caps and mounting hardware for a variety of material thicknesses.



Finished Example



Available in four finishes:



Aluminum

Matte Black

Matte Silver

Matte Gold

Cap Diameter	Item Number	Color
1/2"	OEMK-FM50AL	Aluminum
	OEMK-FM50BL	Matte Black
	OEMK-FM50MG	Matte Gold
	OEMK-FM50MS	Matte Silver

Cap Diameter	Item Number	Color
3/4"	OEMK-FM75AL	Aluminum
	OEMK-FM75BL	Matte Black
	OEMK-FM75MG	Matte Gold
	OEMK-FM75MS	Matte Silver

Cap Diameter	Item Number	Color
1"	OEMK-FM100AL	Aluminum
	OEMK-FM100BL	Matte Black
	OEMK-FM100MG	Matte Gold
	OEMK-FM100MS	Matte Silver

Gyford Simply Standoffs

Standoffs are designed to mount signs, artwork, etc. at a fixed distance from the surface. Use Standoffs to add dimension to your designs.



Finished Example

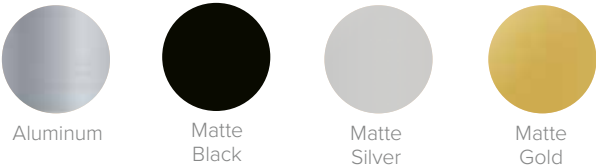


Cap Diameter	Item Number	Color
1/2"	OEMKS-050AL	Aluminum
	OEMKS-050BL	Matte Black
	OEMKS-050MG	Matte Gold
	OEMKS-050MS	Matte Silver
	OEMK-050AL	Aluminum Kit
	OEMK-050BL	Matte Black Kit
	OEMK-050MG	Matte Gold Kit
	OEMK-050MS	Matte Silver Kit

Cap Diameter	Item Number	Color
1"	OEMKS-100AL	Aluminum
	OEMKS-100BL	Matte Black
	OEMKS-100MG	Matte Gold
	OEMKS-100MS	Matte Silver
	OEMK-100AL	Aluminum Kit
	OEMK-100BL	Matte Black Kit
	OEMKS-100MG	Matte Gold Kit
	OEMKS-100MS	Matte Silver Kit

Cap Diameter	Item Number	Color
3/4"	OEMKS-075AL	Aluminum
	OEMKS-075BL	Matte Black
	OEMKS-075MG	Matte Gold
	OEMKS-075MS	Matte Silver
	OEMK-075AL	Aluminum Kit
	OEMK-075BL	Matte Black Kit
	OEMK-075MG	Matte Gold Kit
	OEMK-075MS	Matte Silver Kit

Available in four finishes:



Frame Accessories

Suction Cups

Sign inserts and lenses can easily be inserted and removed using convenient suction cups with removal hook. These suction cups include a hook for hanging signs on windows or glass doors, suction cups are a sign shop staple. They can easily remove sign inserts and lenses from frames.

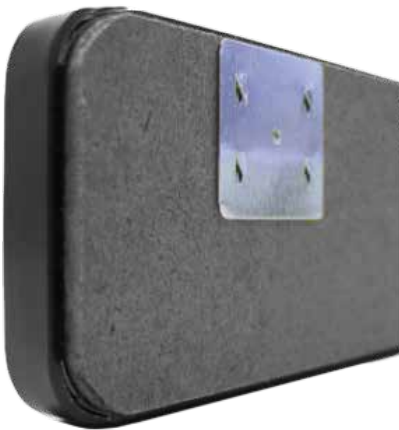
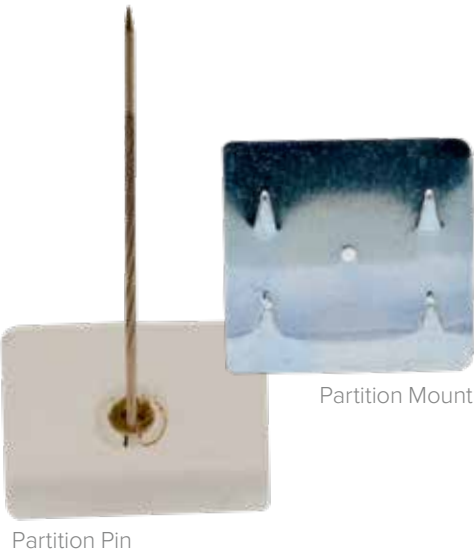
Item Number	Hook Material	Size	Recommended Products
SHKSC	Plastic	0.56"	Simply Curves Simply Design Simply Architect
SC78	Metal	0.875"	Simply Curves Simply Design Simply Architect
SC	Metal	1.875"	Simply Curves Simply Design Simply Architect



Partitions

Partition pins make attaching nameplates to a cloth cubicle wall simple! These pins can also be used with other light weight objects that you are displaying in your office space. Most items require 2 pins to securely hang on a cubicle or partition wall.

A barbed mounting pin designed for use on some of today's woven knit fabric coverings of partitioned office systems, cubicles, workstations and soft walls. Great for hanging sign frames, signs, pictures, and poster wall displays. A durable product that will withstand multiple relocations of the sign with minimal damage to woven knit fabrics. Barb pin is 1" x 1" with four barbs and is made of zinc plated steel.

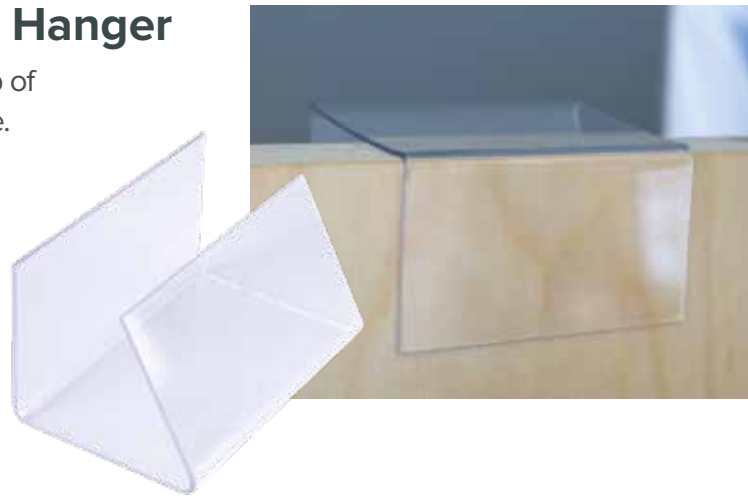


Item Number	Recommended Products
SP11	Simply Wall 1/16" Simply Architect Plastic Simply Design
SP11A	Simply Wall 1/16" Simply Architect Plastic Simply Design
FANGS	Simply Wall 1/16" Simply Architect Plastic Simply Design

Simply Clear Plastic Cubicle Hanger

Mount office signs and nameplates over the top of partitions with this cubicle hanger. Two per case.

Item Number	Recommended Products
PCUBHAN1	Simply Wall 1/16" Simply Wall 1/8" Simply Ribbed Wall



SIMPLY ECONOMICAL.
SIMPLY IN-STOCK.
SIMPLY GUARANTEED.

Simply Dual-Lock with Adhesive Backing

Fitting perfectly into the grooves on Simply Premier and Design frames, Simply Dual-Lock is a great way to secure your sign into its frame. The adhesive backed Dual-Lock give an audible snap to insure positive locking. Inserts are easily removed and changed using suction cups. Sold individually, must buy two to get both top and bottom.

Item Number	Size	Recommended Products
SDUALK	1/2" X 12"	Simply Wall 1/16" Simply Wall 1/8" Simply Ribbed Wall



Simply Corridor Substrate Hardware Mounting

Easily mount substrates to our Simply Corridor Brackets with this hardware. Four per pack.

Item Number	Color	Recommended Products
SBSCREWMB	Matte Black	Simply Corridor
SBSCREWG	Rose Gold	Simply Corridor
SBSCREWS	Silver	Simply Corridor
SBSCREWYG	Yellow	Simply Corridor

Available in four anodized finishes:

